

# AAI Status Update



# SWITCH

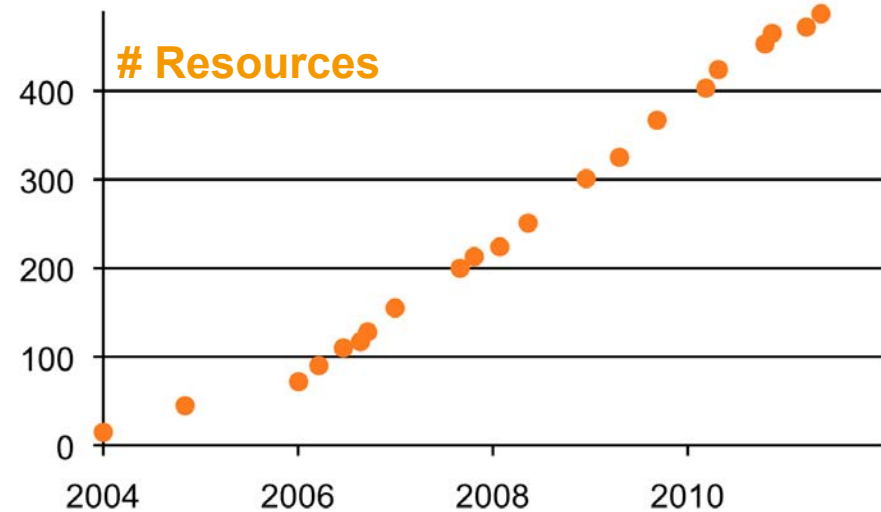
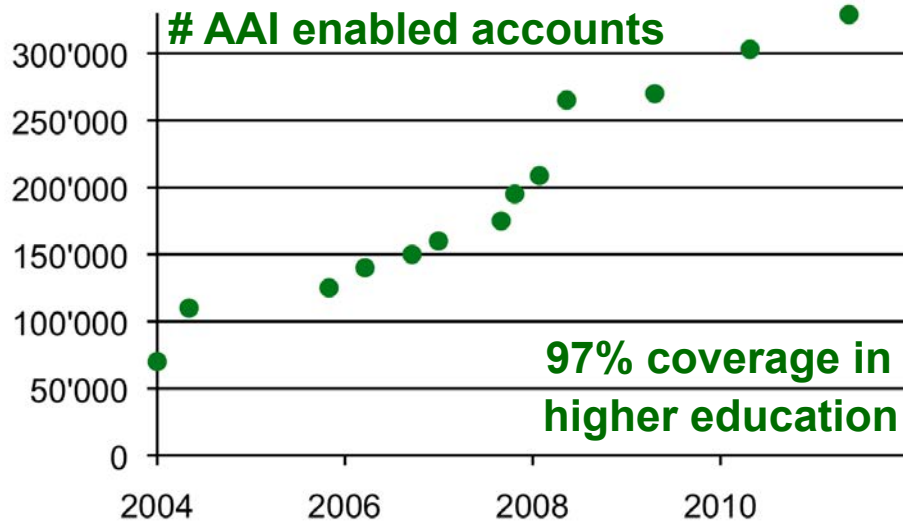
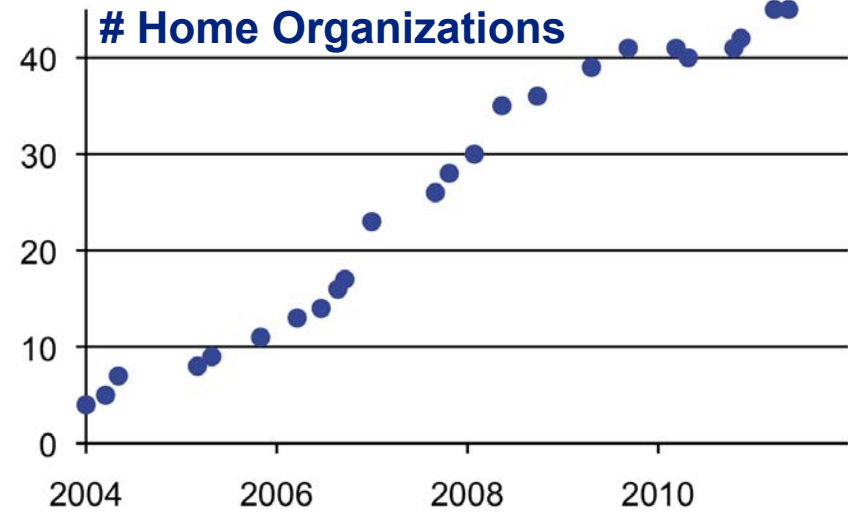
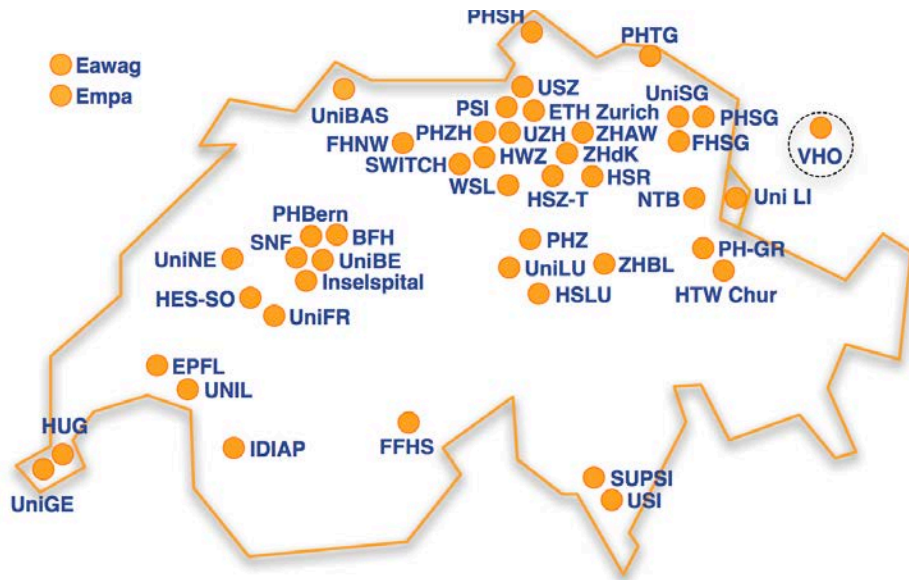
Serving Swiss Universities

Thomas Lenggenhager

[thomas.lenggenhager@switch.ch](mailto:thomas.lenggenhager@switch.ch)

Bern, 24. May 2011

# SWITCHaai Federation Spring 2011



# New Federation Members

- New IdPs
  - Eawag, Dübendorf
  - Empa, Dübendorf
  - FFHS - Fernfachhochschule Schweiz, Brig
  - PHTG - Pädagogische Hochschule Thurgau, Kreuzlingen
  - SNF - Schweizerischer Nationalfonds, Bern
- No IdP installed yet
  - FS-CH - Universitäre Fernstudien Schweiz, Brig
  - HFT-SO - Höhere Fachschule für Technik HF des Kantons Solothurn  
*First 'Tertiary 5B' institution*
- Name Change
  - Universität Liechtenstein (former Hochschule Liechtenstein)

# New Federation Partners

- Association easyswap, Lausanne
- DirAction AG, Wetzikon
- ESN Schweiz, Winterthur
- Healthvidence GmbH, Bern
- Medical Network EMN AG, Kilchberg
- Pathworks GmbH, Kriens
- polyright SA, Sion
- Starmind International AG, Meilen
- studer + raimann AG, Liebefeld
- studirabatte.ch, Zürich
- Verein Linking Pin, Zürich
- Werft22 AG, Baden
- asknet AG, Karlsruhe, DE
- IEEE, New Jersey, US
- Itumi LLC, Ann Arbor, US
- Masaryk University, Brno, CZ
- ProQuest LLC, Cambridge, GB
- Walter de Gruyter GmbH, Berlin, DE
- WoltersKluwer Health | Ovid, New York, US

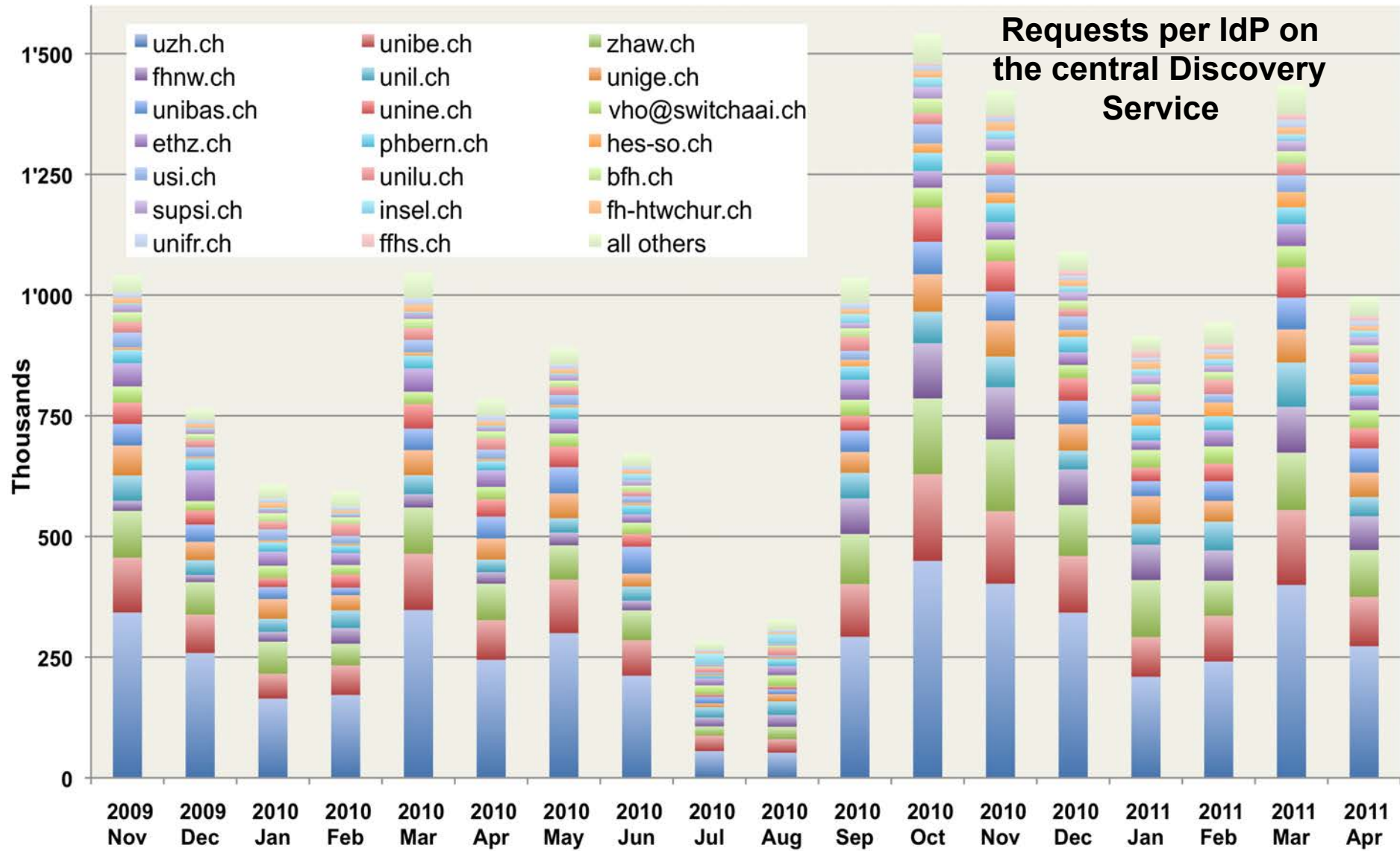
# Interest in AAI from outside Higher Education

- Secondary II
  - Matura School
  - Specialised Middle School
  - Vocational School, apprenticeship, including professional baccalaureate
  - We know of some interest from cantons BE, GE, ZH
    - Can only scale with a single IdP per canton
    - Requires a centralized identity management
- Some interest from the Federal Administration

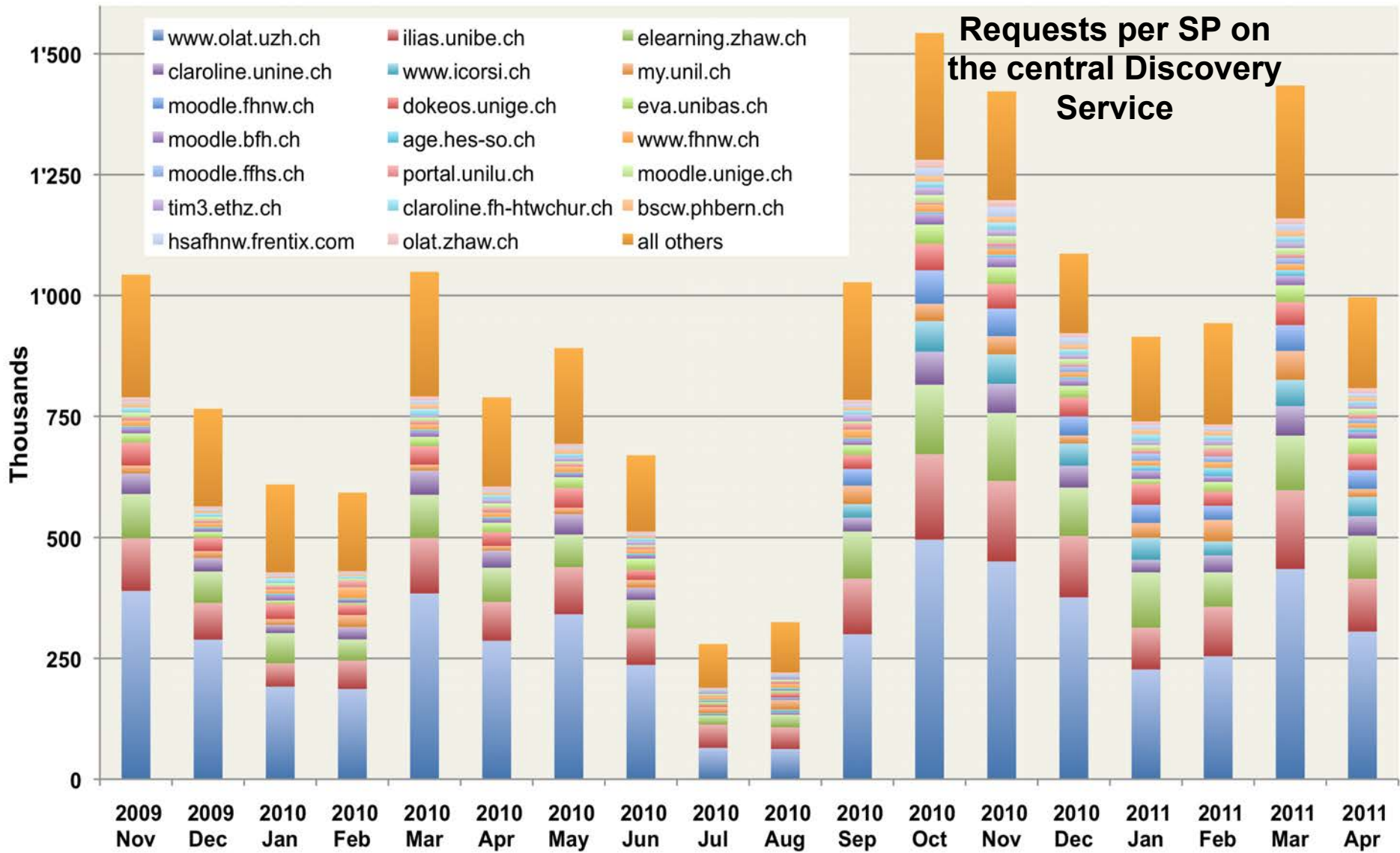
# AAI Identity Provider Hosting

- An optional offer from SWITCH  
Costs according to SWITCH tariff 2011
- Primarily for institutions who lack the human resources or the know-how to operate their own IdP
- Requirement remains a well coordinated identity management at the institution.
  - Hosted IdP requires access to organizational LDAP server

# AAI User Authentication Requests Nov 09 – Apr 11



# AAI User Authentication Requests Nov 09 – Apr 11





# Shibboleth 1.3 → 2.x Migration

- Support for Shibboleth 1.3 ended 30. June 2010

328 days ago!

- IdPs

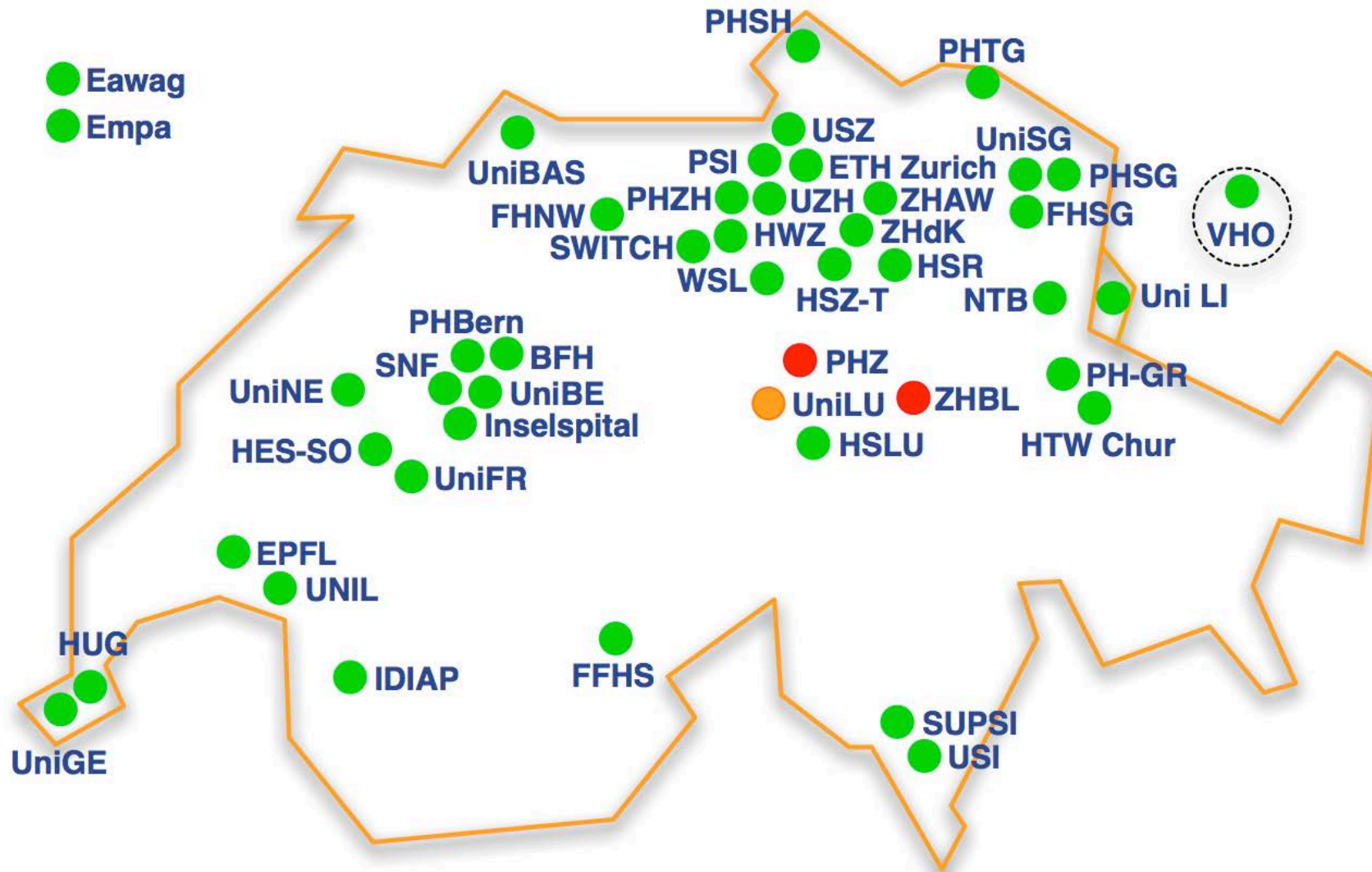
- SAML2 94% (44)                      SAML1 6% (3)

- SPs

- SAML2 83% (404)                      SAML1 17% (82)

- Schedule **now** the upgrade for **this** summer semester break!

# Shibboleth 2 IdP Migration Status May 2011



# Discovery type on Central Discovery Service

