

---

# SWITCH

The Swiss Education & Research Network

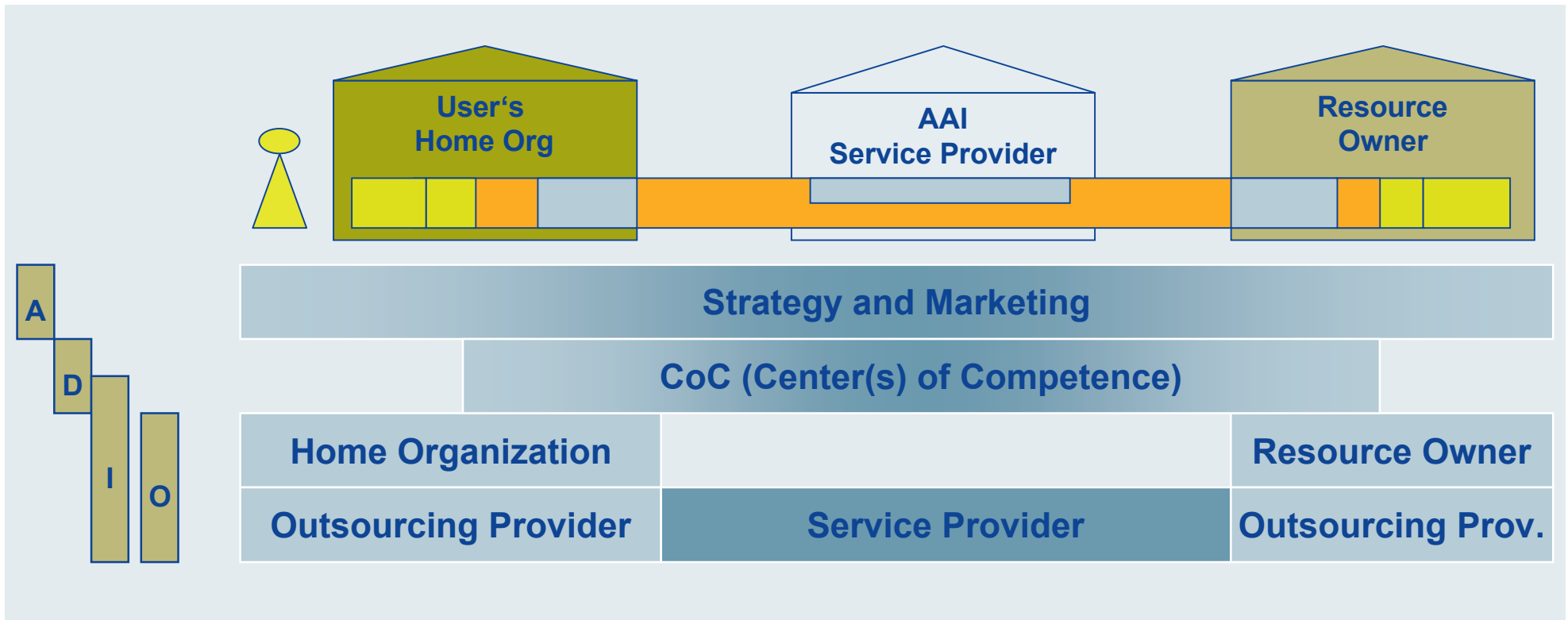
## **Update on current project activities How to get involved**

Christoph Graf, SWITCH

December 2, 2002



# AAI-Organization: Responsibilities (1)

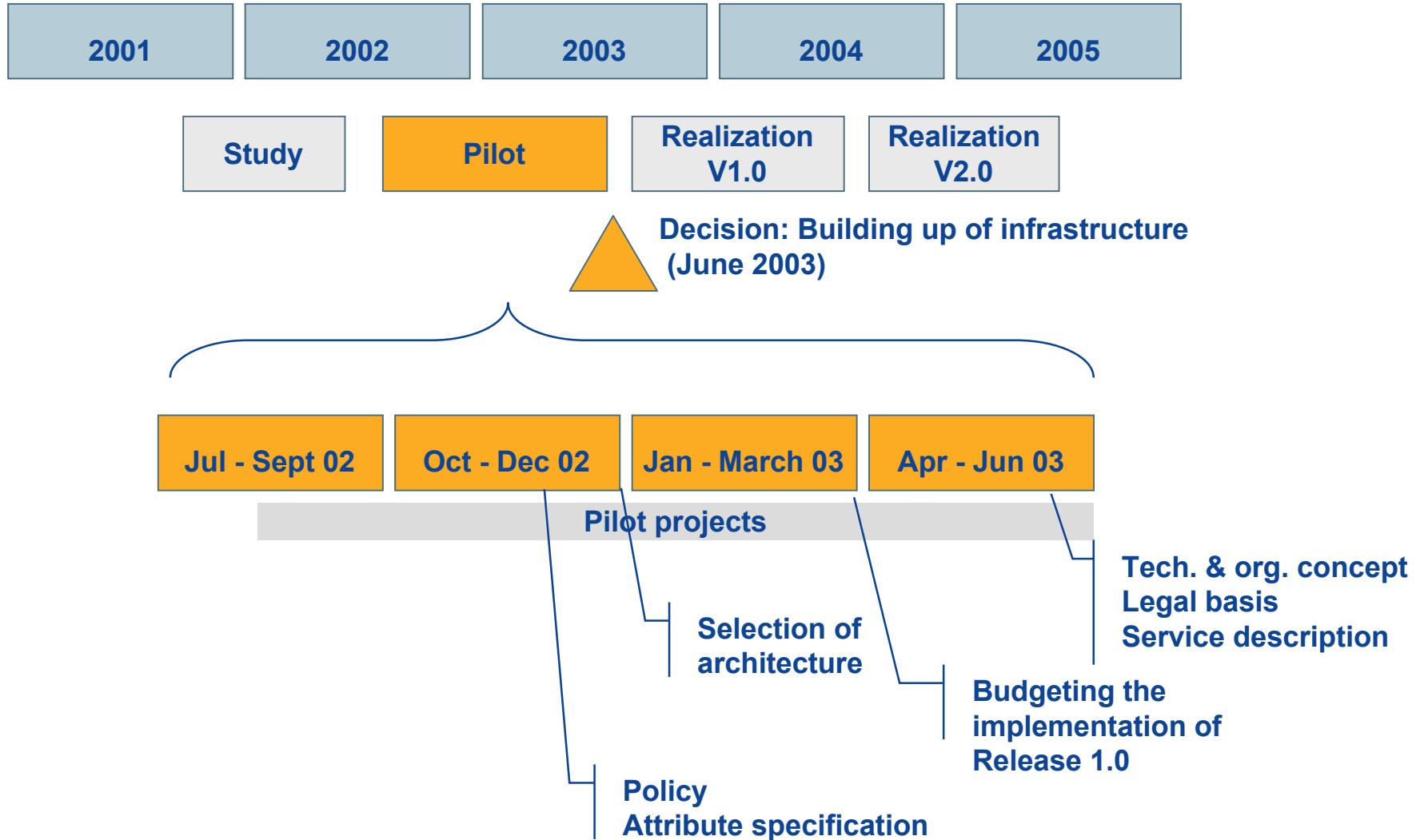


Analysis	AAI systems
Design	Interfaces
Implementation	Resources
Operation	HomeOrg Systems

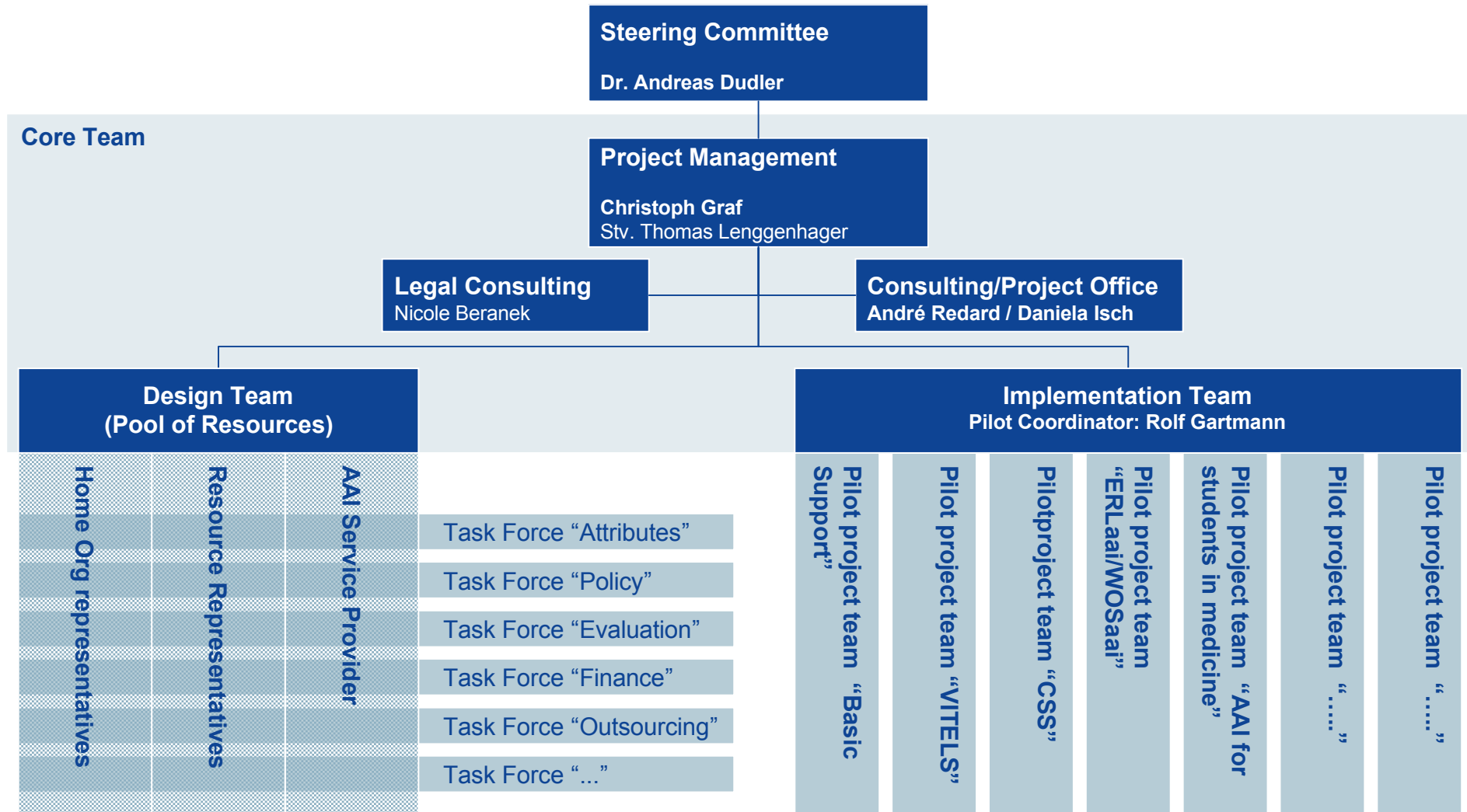
# AAI-Organization: Responsibilities (2)

<b>Strategy and Marketing</b>	<ul style="list-style-type: none"><li>• “Ambassador,” promoting further the AAI idea</li><li>• AAI business alignment, marketing, financing, contracting, and policies</li></ul>
<b>Center(s) of Competence</b>	Act as information and coordination hub by <ul style="list-style-type: none"><li>• serving as interface to developers of the AAI kernel, international organizations, etc.</li><li>• coordinating and performing inter-organizational tasks such as change and release management or defining attribute specifications</li><li>• building up and sharing its knowledge by means of implementing sample solutions, running a test lab, and creating a knowledge base</li></ul>
<b>Home Organization</b>	Implementation, integration and operation of Home Org systems
<b>Resource Owner</b>	Implementation, integration and operation of Resources
<b>AAI Service Provider</b>	Provides central AAI services
<b>AAI Outsourcing Provider</b>	Lowering the entrance barrier and reducing internal costs by providing outsourcing services such as <ul style="list-style-type: none"><li>• User directories or authentication systems (Home Organizations)</li><li>• AAI-enabled portals (Resources)</li></ul>

# Project Planning: Roadmap



# Project Organization



# Some Pilot Projects

Project Name	Organisation(s) Involved	Focus
<b>Basic AAI Support</b>	SWITCH	Sample implementation of architectures on short list, operation of central systems. Support for other pilot projects
<b>VITELS</b>	UNIBE	Portal implementation, WebCT integration (Swiss Virtual Campus project)
<b>Common services for students (CSS)</b>	UNIL, EPFL	Exchange of authentication data regarding students registered at UNIL and EPFL
<b>ERLaai/WOSaai</b>	ETH-Library, Library Consortium	Integration of Content Providers (Silverplatter ERL; Web of Science )
<b>Students in medicine / shared database</b>	UNIL/CHUF, UNIGE/HUG, EPFL	Access to shared database for students in medicine
<b>Students in medicine / professional courses</b>	UNIL, UNIGE	Management of professional courses for advanced students in medicine
<b>CUSO post-graduate program</b>	UNIL, UNIGE, UNIFR, UNINE, EPFL	Management of courses for students in a CUSO postgraduate program
<b>Bio Medicine</b>	Medical Faculties	Portal implementation for 11 SVC projects

# How to get involved?

## Plan now!

Home Org integration

Data consolidation

Process adaption

Resource integration

Portal implementation

Financial impacts

## Participate now!

Start with pilot project

Participate in task forces

Coordinate with similar projects

Tell us your requirements

Review specs and give feedback

Ask for AAI outsourcing services

Inform others about the AAI

## Get in touch!

Phone:

01 268 15 15

E-mail:

[aai@switch.ch](mailto:aai@switch.ch)

Documentation:

[www.switch.ch/aai](http://www.switch.ch/aai)

Mailing List:

see [www.switch.ch/aai](http://www.switch.ch/aai)

# Task Force “Finance”

<p><b>Goals</b></p> <ul style="list-style-type: none"> <li>• Enable Home Organizations and Resource Owners to estimate initial and recurring cost for the AAI (time frame mid 2003-2005) by providing             <ul style="list-style-type: none"> <li>• a cost estimation model</li> <li>• cost estimation for typical cost factors</li> <li>• cost estimation for mandatory and optional central services operated by SWITCH</li> </ul> </li> </ul>	<p><b>Start</b></p>	<p><b>End</b></p>
	<p>15 January 2003</p>	<p>31 May 2003</p>
	<p><b>Input</b></p>	
	<ul style="list-style-type: none"> <li>• Preparatory study (<a href="http://www.switch.ch/aai">www.switch.ch/aai</a>)</li> </ul>	
	<p><b>Dependencies</b></p>	
	<ul style="list-style-type: none"> <li>• Experiences within pilot projects</li> <li>• AAI service description</li> <li>• Architecture evaluation</li> </ul>	
<p><b>Expected Results</b></p> <ul style="list-style-type: none"> <li>• Cost estimation model for HomeOrg and Resources for             <ul style="list-style-type: none"> <li>• initial implementation and integration costs</li> <li>• recurring internal and external costs</li> </ul> </li> <li>• Cost estimation for typical cost factors (costs which are independent of the current IT architecture of a HomeOrg/Resource, e.g. cost for AAI-enabling of a web resource)</li> <li>• Tariffs for central AAI services and outsourcing services (as defined in “AAI Service description”)</li> </ul>	<p><b>Members</b></p>	
	<p>SWITCH</p>	
	<p><b>Please register at</b>  <a href="http://chx400.switch.ch/mailman/listinfo/aai-tf-fin">http://chx400.switch.ch/mailman/listinfo/aai-tf-fin</a></p>	